



KNOWLEDGE ORGANISER: Science- Digestion Year 4 Block 4

Key Vocabulary

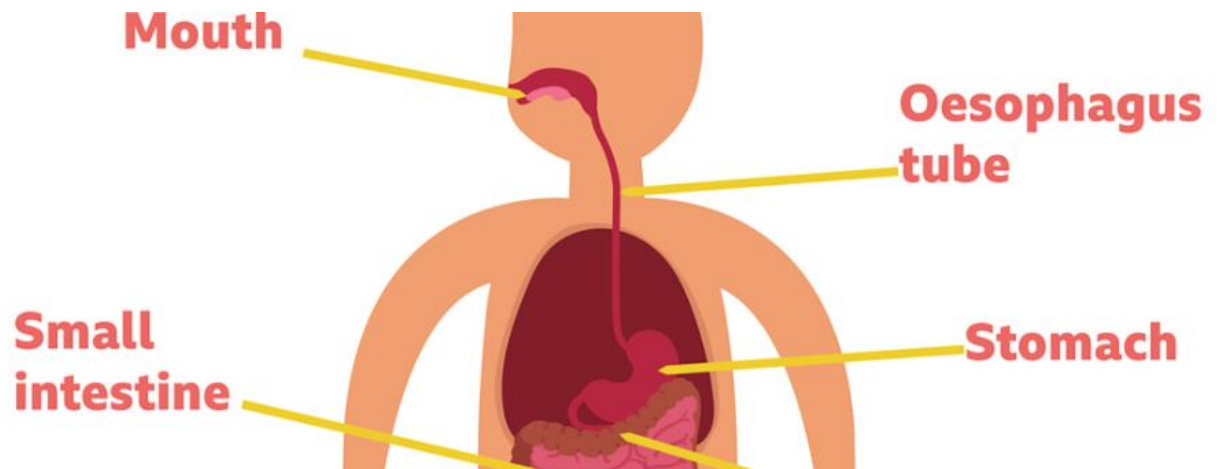
carnivore	Animal which feeds on meat
herbivore	Animal which feeds on plants
omnivore	Animal which feeds on both plants and meat
oesophagus	Tube which connects the throat to the stomach
stomach	Organ in the body which begins digestion
Small intestine	Organ which absorbs nutrients from food
Large intestine	Organ which stores food and absorbs water
tooth decay	When teeth rot due to damage to the enamel
enamel	Hard outer coating on teeth
molars	Teeth for grinding
incisors	Teeth for cutting
canines	Teeth for tearing

Learning Intention: To understand how the human digestive system functions and its key components.

- Understand the vocabulary for the principal components of the digestive system.
- Understand how each component within the digestive system functions to digest food.
- Learn about healthy eating and how it affects our bodies, including the health of our teeth, and be able to make health choices.

Key Knowledge

- Learn about the different eating habits of animals and how these animals can be grouped accordingly. – Understand the vocabulary and the function of the main components of the human digestive system. – Learn how the shape of teeth determine their function and the eating habits of their owner. - Learn basic nutrition and facts about healthy foods. – Understand how to make sensible choices about the food we eat. – Learn how to keep teeth healthy and what causes tooth decay. – Apply all this information to make informed choices.



Resources



Websites

- ✓ [Digestive health - NHS \(www.nhs.uk\)](http://www.nhs.uk)
- ✓ [What is the digestive system? - BBC Bitesize](http://www.bbc.com/bitesize)
- ✓ [The human digestive system - National Geographic Kids \(natgeokids.com\)](http://www.natgeokids.com)

Textbooks

Reading Links

